



RECYCA
Recycling Cartridges

Collection program Recyca

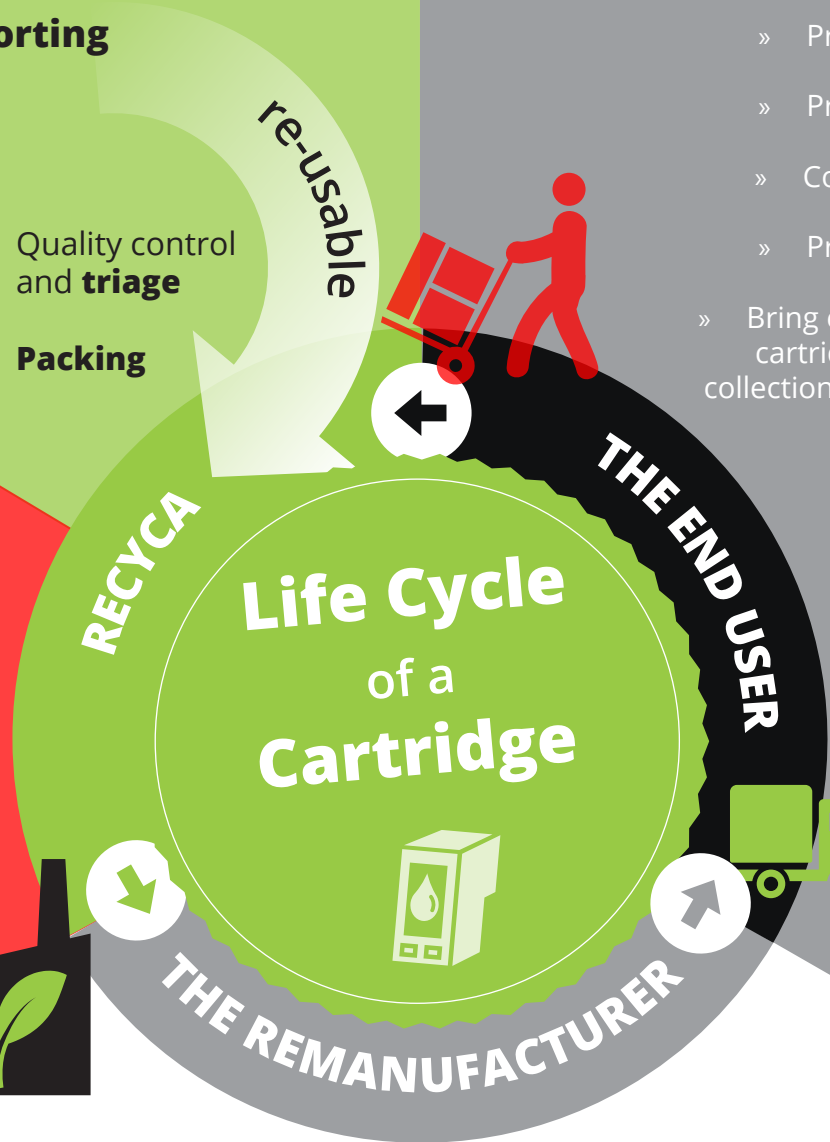
- » **Collecting** empty cartridges
- » Unpacking and **material sorting** (*primary inspection*)

- » Printing
- » Printing
- » Copying
- » Printing
- » Bring empty cartridge to collection point

- » Quality control and **triage**
- » **Packing**

- » Delivery for **waste disposal**
- » Disassemble
- » **Crush** and scrapping
- » Sort

Synthetic resin (43%)
Metal (38%)
Non-metals (5%)
Discarded toner powder (3%)
Miscellaneous (11%)



- » Quality **control**
- » **Remanufacturing /** New product creation

- » Packaging
- » **Distribution** to the shop

Recyca

Delften 23, hal 701
2390 Westmalle

T: +32 3 380 00 10
W: www.recyca.be

BTW: BE 0475 838 547
OVAM: 56676/E629